

FIRE SAFETY MADE EASY

Morley-IAS Plus



Honeywell

MORLEY IAS

MORLEY-IAS PLUS FIRE ALARM PANELS



Morley-IAS Plus control panel includes Honeywell's Advanced (AP) protocol which maximizes the speed and efficiency of alarm detection, as well as providing maximum information to the installer. The 4.3" (480x272 pixel) touch screen provides an intuitive user interface via its menus with quick and easy system operation. The Plus control panel allows full system configuration from the screen itself. The Plus is a single loop addressable panel expandable to two loops with an optional loop card (PL-LIB01). Each loop supports 159 detectors and 159 input / output modules.

KEY FEATURES

- 4.3" / 109.2 cm Touch-screen graphical color display, 480 x 272 pixel resolution with back illumination and back-lit membrane buttons
- Multiple language selections
- Intuitive colour event indication tab for an overview of system status at a glance
- Simple DOT Matrix Cause and Effect rule builder.
- Quick configuration of the unit from the same display
- On-screen 16 Virtual Zonal LED indicators with event color coding to increase situational awareness.
- Single loop, expandable to 2 loops. 318 addresses per loop (159 detector + 159 Modules)
- Certified to EN54-2, EN54-4; EN54-13; LVD 62.368-1:2014+A11
- Morley-IAS Advanced Protocol
- Enhanced Agile™ wireless features, including on-screen device battery and signal strengths
- Includes serial communication ports for TPP including Connected Life Safety Services (CLSS) and repeaters (*)

SUITABLE FOR A WIDE RANGE OF APPLICATIONS



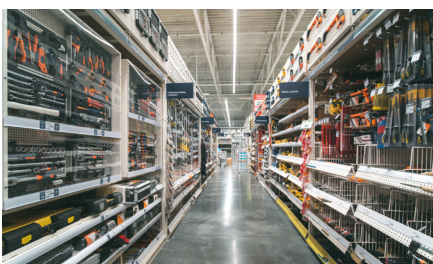
RESIDENTIAL



SCHOOLS



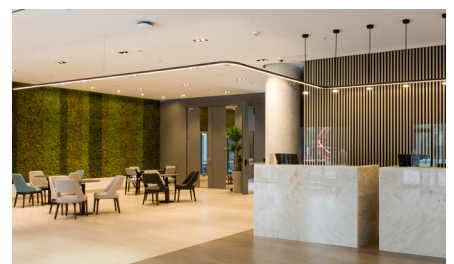
RESTAURANTS



SHOPS AND RETAIL CHAINS



OFFICE SPACES



HOTELS

BENEFITS

- Minimal fire system expertise needed for installation and commissioning
- Less disruption during installation
- Commissioning in less than 2 hours
- Reduced total cost of ownership
- CLSS connectivity
- Enhanced wireless device diagnostic

PRODUCT INFORMATION	
PL-1000	Morley-IAS Plus compact addressable fire panel with single loop - supporting up to 318 addressable devices
PL-LIB01	Optional loop module PL-LIB01 adds an additional loop to PL-1000, expanding the system up to two loops

(*) Available soon

MORLEY-IAS HM SERIES ADVANCED PROTOCOL

The revolutionary Morley-IAS HM Series Advanced Protocol range delivers a totally new detector platform that incorporates the new digital Series. The new Protocol delivers more devices on the loop and gives greater control, and device management whilst enabling the overall system to be optimised to the location and use of the building with far greater flexibility than ever before.

All Morley-IAS HM Advanced detectors are environmentally friendly and meet the WEEE and RoHS requirements, minimising end of life disposal costs.



KEY FEATURES

- Fast installation with rotatory addressable switches (01-159)
- Enhanced smoke chamber design to reduce false alarms by dust or contamination
- Dual integrated LED for 360° visibility
- Base complements the detector and is easy to install and wire
- Environment friendly – meets RoHS legislative requirements

WIRELESS FIRE DETECTION

The Agile Wireless Fire Detection system offers unmatched levels of communication reliability and installation flexibility. It provides a robust and efficient method of delivering an integrated fire detection solution across a wider variety of applications, with greater simplicity and scalability. The platform is built on a powerful mesh technology, with multiple communication paths to minimise interference and maximise system robustness.

KEY FEATURES

- Mesh technology with multiple communication paths for increased reliability
- 18RF channels at 868MHz - provides greater tolerance to interference
- Two integrated antennas on each wireless device
- Up to 400 m free air communication range – providing good coverage levels
- Average 5 year battery service life – reducing maintenance requirements
- Addresses set using rotary switches – reduced commissioning time
- Wired fire devices look and feel – easier installation and visual integration
- Patented battery service life prediction feature – more proactive maintenance
- Loop powered Gateway – reduced installation cost and time
- Up to 8 Gateways per loop
- Up to 32 Wireless devices per Gateway
- Agile IQ 4 in 1 software for easy design, survey, configuration and diagnostics

